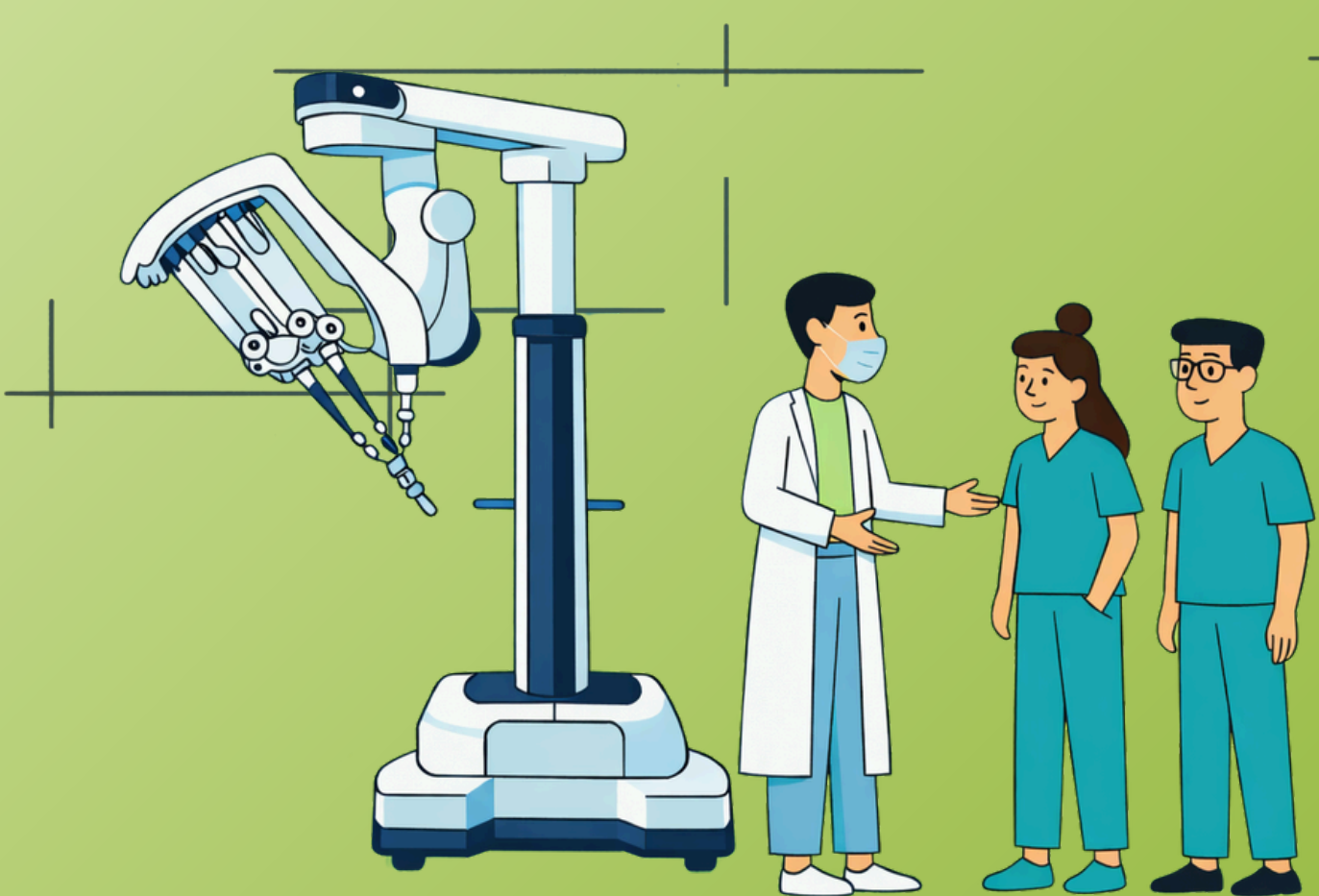




ORSI  
ACADEMY

INTUITIVE

# Basic skills Course - Multispecialty on Single Port



# Basic skills Course - Multispecialty on Single Port



SCAN FOR  
DATES & DETAILS!

 1-day course

 3 seats per session

## Who is this course for?

Surgeons and surgical trainees (including ENT and other specialties) who want to build foundational skills in single-port robotic surgery.

## What will I learn?

You will learn the principles, setup, and hands-on techniques of Single Port robotic surgery, including docking, dissection, suturing, and troubleshooting.

## Who will I learn from?



### Orsi Academy Robotic Experts

PBP-certified trainers, skilled in Proficiency-Based Progression methodology.



## Included in your course

- Course materials
- Use of procedure-specific training models
- Certificate of attendance
- Possibility to apply for CME credits
- Access to the Orsi Academy network
- Lunch and coffee breaks

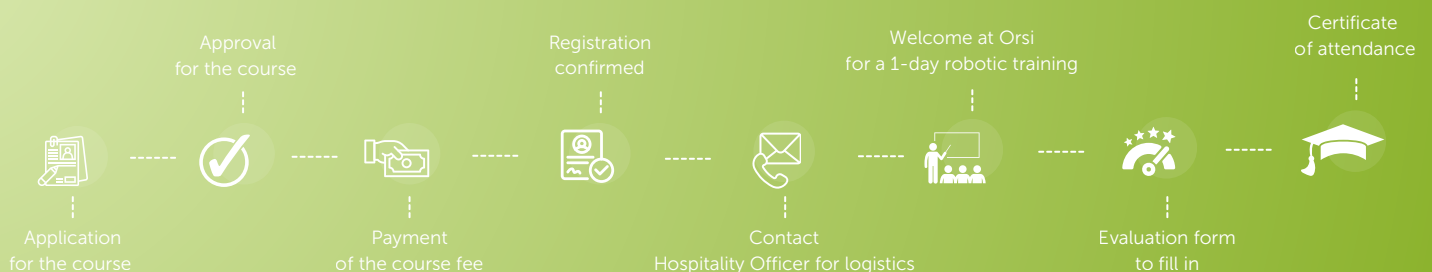


## Training models

### Chicken model

Realistic tissue handling for safe, repeatable practice of core robotic skills.

## Timeline



## DAY 1

### **08:30 Welcome & Introduction**

- Course overview, objectives, and safety briefing

### **09:00 Lecture: Fundamentals of Single-Port Robotic Surgery**

- System design and workflow
- Ergonomics, instrumentation, and docking principles
- Comparison with multi-port robotic and laparoscopic approaches

### **09:30 Basic device training on a da Vinci Single Port platform**

- Ergonomics, instrumentation and docking
- Hands-on demonstration of robot positioning and trocar placement
- Participants perform docking under supervision

### **10:00 Hands-on training on chicken model according to PBP based metrics**

- Suturing & knotting practice
- Dissection and coagulation practice

### **13:00 Lunch Break**

### **13:45 Continue hands-on training on chicken model according to PBP based metrics**

- Suturing & knotting practice
- Dissection and coagulation practice

### **16:30 Troubleshooting & Common Pitfalls Discussion**

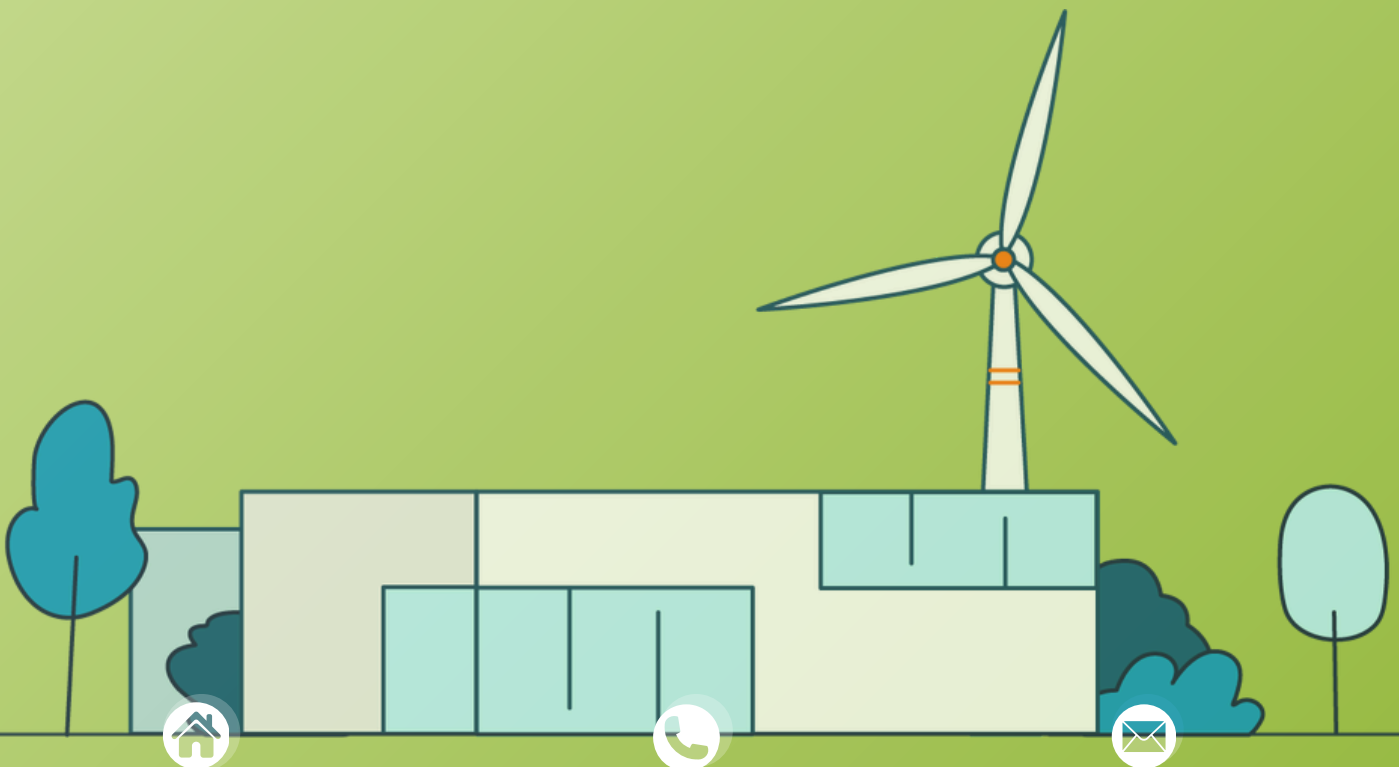
- Managing limited working space and visualization
- Tips for optimizing dissection angles and trocar trajectory
- Common complications and how to prevent them
- Managing bleeding and ischemia time
- Tips and tricks

### **17:00 End of the course**



## NOT FOUND WHAT YOU WERE LOOKING FOR?

We also provide **on demand tailor-made training offerings**. Please reach out to [info@orsi.be](mailto:info@orsi.be) with your training request to explore the countless possibilities.



Proefhoevestraat 12,  
9090 Melle, Belgium

+32 9 334 69 26

[info@orsi.be](mailto:info@orsi.be)